



Creating Wealth Creating Opportunities

Bringing Beneficial and Sustainable Change

REFINED CANOLA OIL

Commodity: Canola (Rapeseed) Oil (RCOA).

Type: Refined, Winterized, Deodorized, Bleached.

Origin: Ukraine, Russia or other.

Standards: Conform to International Standard Organization ISO/TC 34/SC11

- Quality: Fit for human consumption, free from foreign matter, any other oil or animal fats.
Color (5^{1/4} Lovibond): Red 3 maximum, light yellow, clear and transparent.
Odor: Characteristic taste and no odor.
Visibility: Without any deposition and blurriness.
Taste: Neutral, without an artificial taste, free from rancidity or any strange or bad taste and smell.
Shelf Life: 12 months, can be up to 24 months with addition.

■ **Physical and Chemical Analysis Values:**

(The values may vary within standards)

Free Fatty Acid, % m/m Oleic Acid: 0,3 maximum.

Acid Number, mg KOH/g: 0,6 maximum.

Peroxide Value, meq O₂/kg: 10,0 maximum.

Iodine Value, WIJS: 105 - 126

Moisture and Volatile Matter, %: 0,2 maximum.

Saponification Value, mg KOH/g: 182 - 193

Unsaponifiable Substances, g/kg: 2,0 maximum.

Insoluble Substances in Ether, %: 0,05 maximum.

Refractive Index, at 40°C: 1,465 - 1,467

Specific Gravity, g at 20°C: 0,914 - 0,920

Soap Content, %: 0,005 maximum.

Halphen Test: Negative.

Mineral Oil Test: Negative.

Sesame Oil Test: Negative.

Cold Test, 5,5 hours at 0°C: Clear.

South Asia Corporation Inc.

(Registered as Wevard Consulting services-WCS)

Merchant Export | Import | Trade | Agricultural Consultancy | Project Management | Research and Development

Merchant Export Division: APL-PRO A306, New Jessore Road South, Kolkata (Calcutta), 700132, West Bengal, India

Dubai Branch: NBQ Building, P.O. Box 50777, Al Mankhool, Dubai, U.A.E. [شركة جنوب آسيا المحدودة]

Email: mail@southasiacorporation.com / info@southasiacorporation.com

Web: www.southasiacorporation.com

The leading global merchant exporter رائدة تاجر التاجر العالمي



Creating Wealth Creating Opportunities

Bringing Beneficial and Sustainable Change

■ **Heavy Metal Analysis:**

Iron (Fe): 1,5 ppm maximum.
Copper (Cu): 0,1 ppm maximum.
Lead (Pb): 0,1 ppm maximum.
Arsenic (As): 0,1 ppm maximum.

■ **Fatty Acid Composition (%):**

Kaproic Acid C 6:0: 0,05 maximum.
Kaprillac Acid C 8:0: 0,05 maximum.
Kapric Acid C 10:0: 0,05 maximum.
Lauric Acid C 12:0: 0,05 maximum.
Miristic Acid C 14:0: 0,2 maximum.
Palmitic Acid C 16:0: 2,5 - 7,0
Palmitoleic Acid C 16:1: 0,6 maximum.
Margaric Acid C 17:0: 0,3 maximum.
Heptadecenoic Acid C 17:1: 0,3 maximum.
Stearic Acid C 18:0: 0,8 - 3,0
Oleic Acid C 18:1: 51,0 - 70,0
Linoleic Acid C 18:2: 15,0 - 30,0
Linolenic Acid C 18:3: 5,0 - 14,0
Arachidic Acid C 20:0: 0,2 - 1,2
Eicocenoic (Gadoleic) Acid C 20:1: 0,1 - 4,3
Eicosadienoic Acid C 20:2: 0,1 maximum.
Behenic Acid C 22:0: 0,6 maximum.
Docosenoic (Erusic) Acid C 22:1: 2,0 maximum.
Docosadienoic Acid C 22:2: 0,1 maximum.
Lignoseriac Acid C 24:0: 0,3 maximum.
Nervonic Acid C 24:1: 0,4 maximum.

South Asia Corporation Inc.

(Registered as Wevard Consulting services-WCS)

Merchant Export | Import | Trade | Agricultural Consultancy | Project Management | Research and Development

Merchant Export Division: APL-PRO A306, New Jessore Road South, Kolkata (Calcutta), 700132, West Bengal, India

Dubai Branch: NBQ Building, P.O. Box 50777, Al Mankhool, Dubai, U.A.E. [شركة جنوب آسيا المحدودة]

Email: mail@southasiacorporation.com / info@southasiacorporation.com

Web: www.southasiacorporation.com

The leading global merchant exporter الرائدة تاجر التاجر العالمي



Creating Wealth Creating Opportunities

Bringing Beneficial and Sustainable Change

■ **Nutrition Facts in 100 gram:**

Energy Value: 900 kcal / 3700 kjoule

Total Fats: 100 g

Saturated Fats: 8 g

Monounsaturated Fats: 65 g

Polyunsaturated Fats: 27 g

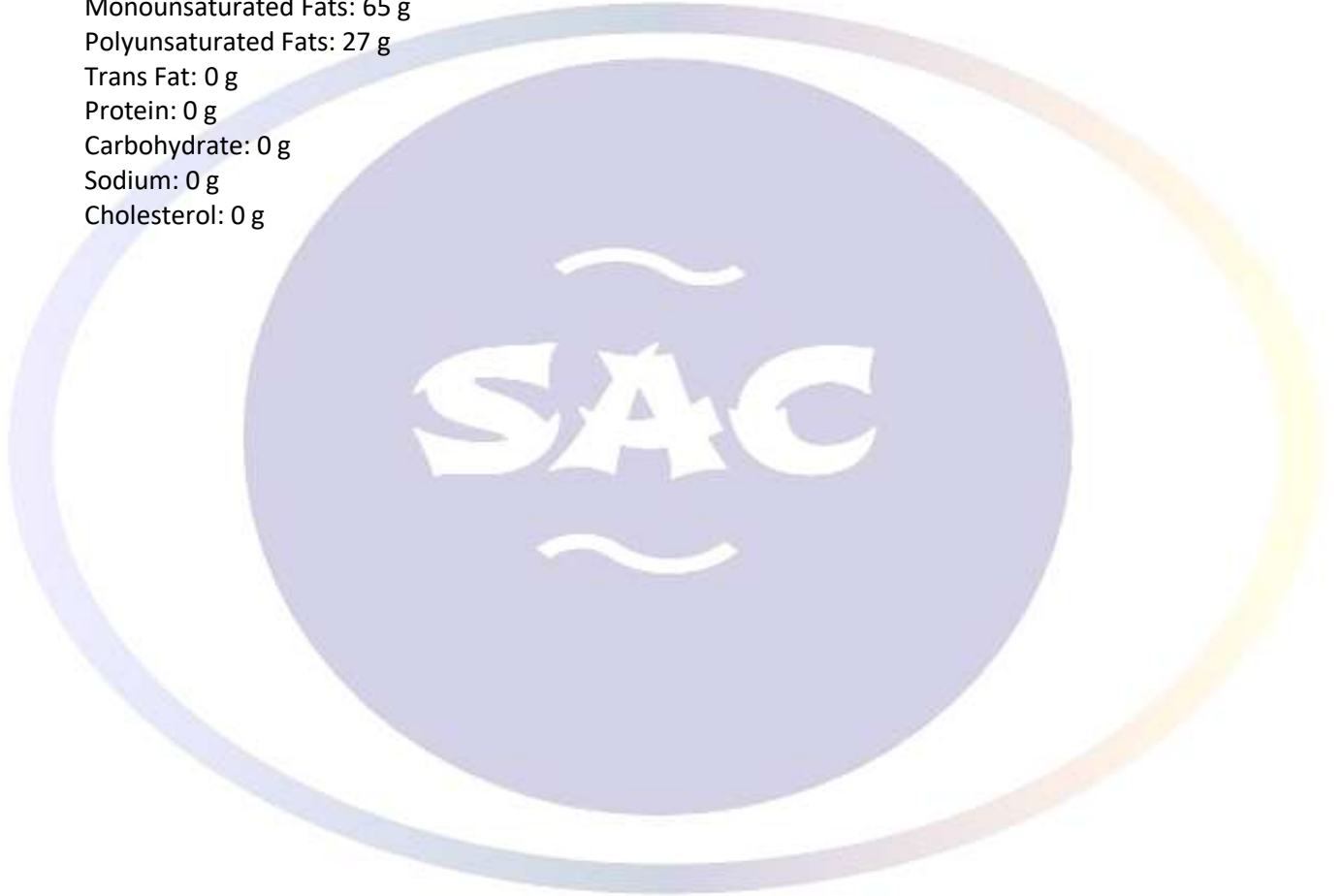
Trans Fat: 0 g

Protein: 0 g

Carbohydrate: 0 g

Sodium: 0 g

Cholesterol: 0 g



South Asia Corporation Inc.

(Registered as Wevard Consulting services-WCS)

Merchant Export | Import | Trade | Agricultural Consultancy | Project Management | Research and Development

Merchant Export Division: APL-PRO A306, New Jessore Road South, Kolkata (Calcutta), 700132, West Bengal, India

Dubai Branch: NBQ Building, P.O. Box 50777, Al Mankhool, Dubai, U.A.E. [شركة جنوب آسيا المحدودة]

Email: mail@southasiacorporation.com / info@southasiacorporation.com

Web: www.southasiacorporation.com

The leading global merchant exporter الرائدة تاجر التاجر العالمي